

RYERSON THEATRE SCHOOL PRESENTS

A Midsummer Night's Dream

By William Shakespeare

Rehearsed with Ian Watson

Co-rehearsed with Tim Welham

Choreography by Patricia Allison
Assistant Director - Robynne Harder
Lighting Design by Athena Chau
Set Design and Video Design by Waleed Ansari
Costume Design by Sim Suzer

DECEMBER 2 - DECEMBER 5 AT 7:30PM
ABRAMS STUDIO THEATRE
46 Gerrard Street East

www.ryersontheatre.ca
Box Office: 416-979-5118
rtsinfo@ryerson.ca



Ryerson
University

A Message from Ian Watson

Shakespeare's *A Midsummer Night's Dream* is a perfect play. A rollicking comedy, its dominate rhyming verse carries the play lightly and resolutely forward. But it has moments of great passion and great longing, of profound sorrow, joy and wonder. It remains a Comedy in that we the audience tend to have a greater world view than the characters in the play. But it often opens our eyes onto realms little realized or once-lost. Its three main plots, framed by the overriding story of Theseus and Hippolyta, seamlessly interweave and double back on themselves and each other, each resolving in triumph and/or a unity specific to them. It begins with the passionate expectancy of a Wedding, it ends in a Blessing.

It is a play about Love, certainly: love of many things, love in many guises. But perhaps even more it is a play about the Imagination; about the power to conjure other "worlds," other realities, other futures; the power to make connections. The job of the theatre practitioner is about the very same thing.

The door into plays such as this one is through the language, and the dialogue that must take place between the author's words and the imaginations of the actors, designers and technicians. To (badly) quote a teacher of mine, "where is the author asking me to go, in my imagination, at this moment?" In this age of i-thingys and instant everything, and the double-damning title of "Social Media," the sheer discipline and effort it takes to probe this language is daunting. But it is worth it. It is worth it because it furthers the training of the artist; it asks the actor-student to develop their own relationship with words, with their birthright of language. It calls the young artist to experience the power of human expression through Art, Feeling through the expression found in the Form.

Such exposure and practice with the greatest of writers can only further acting; it can only result in a refinement of both the tools and the practitioner her/himself. I believe it trains the person: that wrestling with these works is a lifelong learning curve in the Art of the Human. It is in this spirit that we present our story.

Thank you for coming.

Special Thanks

A special thanks to the following:

Peggy Shannon
Perry Schneiderman
Irene Pauzer
Pippa Domville
Alex Gilbert
Peter Fleming
Patricia Allison
Annie Bunting
Bruce Ryder
Janine Pearson
Anik Watson
Bernard Hopkins
David Latham
Michael Mawson
Matthew Sirna
Michael Ahn
Susanna Feng
Ryerson students past and
present

Special thanks to Tim Welham for his continued support and assistance in this exercise.

*This performance runs approximately 2.5 hours including a fifteen minute intermission.
Refreshments are available for purchase in the Green Room located on the second floor.*

Acting Company

A Midsummer Night's Dream

Elizabeth Adams	<i>Titania / Paeseblossom</i>
Alex Aoki	<i>Demetrius</i>
Dana Carrabon	<i>Oberon</i>
Nick Dolan	<i>Lysander / Mustardseed</i>
Mattie Driscoll	<i>Helena / Fairy</i>
Greg Eadie	<i>Demetrius / Attendant</i>
Ziad El Khachab	<i>Oberon</i>
Dallas Ensing	<i>Egeus / Philostrate</i>
Thomas Fournier	<i>Snout (Wall) / Egeus (for one night - Dec. 5)</i>
Jonathan Gordon	<i>Flute (Thisbe)</i>
Sydney Herauf	<i>Puck / Fairy</i>
Veronica Hortiguera	<i>Hermia / 1st Fairy</i>
Liam Kinahan	<i>Attendant / Lysander</i>
Reid Lansky	<i>Theseus</i>
Andrew Maloney	<i>Nick Bottom / Attendant</i>
Kate Martin	<i>Helena / Fairy</i>
Clare McConnell	<i>Titania</i>
Nicole Moller	<i>Hippolyta / Cobweb</i>
Anastasia Piro	<i>Snug The Joiner (Lion) / Moth</i>
Paige Schuman	<i>Quince</i>
Ryan Tapley	<i>Philostrate / Starveling The Tailor (Moonshine)</i>
Kyra Van Den Enden	<i>Hermia / Fairy</i>
Greta Whipple	<i>Puck</i>
Dylan Worth	<i>Nick Bottom</i>

Production Team

Katrina Fletcher *Production Manager*
Ivy Mazariegos *Technical Director*
Jake Jamieson *Stage Manager*

Waleed Ansari *Set Designer*
Sim Suzer *Costume Designer*
Athena Chau *Lighting Designer*

Beth Dobson *Head Stage Carpenter*
Laura Coleman *Head Electrician*
Noah Langer *Head of Audio*
Edith Nataprawira *Head Painter*
Chandos Ross *Head of Props*
Jade Logan *Wardrobe Supervisor*
Kyle Maenz *Head Dresser*

Shellie Costa *Front of House Supervisor*
Mohamad Abou Ali *Box Office Manager*

Alex Doody *Assistant Stage Manager*
Robynne Harder *Assistant to the Director*
Ryan Ostrowski *Assistant to the Costumer Designer*
Electa Porado *Assistant Set Designer*
Kira Duff *Assistant Paints*

Alysson Bernabe *Production Assistant*
Taylor Caldwell *Production Assistant*
Elizabeth Colleran *Production Assistant*
Caitlin Gribbin *Production Assistant*
Linas Kairys *Production Assistant*
Christopher Matthews *Production Assistant*
Andrew Nasturzio *Production Assistant*
Scott Phyper *Production Assistant*
Aditi Sharma *Production Assistant*
Dominique Vigneri *Production Assistant*

Ryerson Theatre School - Production Team

Edward Lu *Abrams Technical Coordinator*
Margaret Matian *Abrams Assistant Technical Coordinator*
Brittany-Ann Halbot *Abrams Head of Staging*

Francesca Royall *Shop Supervisor*
Katherine Antonini *Wardrobe Shop Supervisor*
Milica Zugic *Term Cutter*
Kristine Harding *Props Supervisor*

Caitlin Cooke *Hair and Make-Up Supervisor*
Una Wabinski *Hair and Make-Up Assistant*

Mariah Ventura *Head of Audience Relations*
Krista Gorizzan *Front of House Manager*
Kvesche Bijons-Ebacher *Marketing and Publicity Manager*
Alex Choo *Social Media Manager*
Deann Gao *Social Media Manager*
Czarina Martinez *Design Supervisor*
Hannah Crawford *Archivist*

Performer Biographies



Elizabeth Adams

Ryerson Works: Katherine, *The Secret Rapture* (2015).

Other Works: Ellie, *Let's Talk About*, Ontario School of Devised and Physical Theatre (2015/2016); Marianne Bachmeier, *This Is For You Anna*, Southern Ontario Youth Theatre Festival (2014); Vanessa, *In The Heights*, Walkerville Centre for the Creative Arts (2014); Kitty, *The Drowsy Chaperone*, Theatre Ensemble (2014).



Alex Aoki

Ryerson Works: Billy, *Streamers*, Scene Study (2015).

Other Works: Declan, *American Idiot*, Strathcona Alumni Theatre Co. (2015); Pete/Paul/Big Tony, *Dogfight*, Strathcona Alumni Theatre Co. (2014); Duke Vincent, *Measures*, Strathcona Theatre Co. (2014).



Dana Carrabon

Ryerson Works: Roger, *Streamers*, Scene Study (2015).

Other Works: Jerry, *Voices From The High School*, Agincourt Drama Company (2012); Romeo, *Romeo and Winifred*, Agincourt Drama Company (2011); Ferdinand, *The Tempest*, Agincourt Drama Company (2009).



Nick Dolan

Ryerson Works: Billy, *High Life*, Scene Study (2015).

Other Works: Jesus, *Godspell*, Perth County Players (2012); Gardener's Boy/Watch Member, *Much Ado About Nothing*, Stratford Festival (2012); Town's Boy, *The Merry Wives of Windsor*, Stratford Festival (2011).

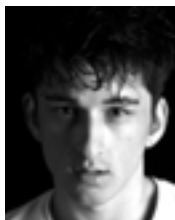


Mattie Driscoll

Ryerson Works: Kess, *Independence*, Scene Study (2015).

Other Works: Ursula, *Bye Bye Birdie*, St. Peter's Secondary School (2014); Liesel, *The Sound of Music*, Peterborough Theatre Guild (2013); Wendy, *Peter Pan*, St. Peter's Secondary School (2012).

Performer Biographies



Gregory Eadie

Ryerson Works: Nial, *Moment*, Scene Study (2015).

Other Works: Tommy Djilas, *The Music Man*, Beal Musical Theatre (2014); Angel, *Rent*, Vauxpunk Productions (2013); Seaweed J. Stubbs, *Hairspray*, Beal Musical Theatre (2012); Eurylochus, *The Odyssey*, The Grand Theatre (2010).



Ziad El Khachab

Ryerson Works: Cousin Julio, *The Motherfucker with the Hat*, Scene Study (2015).

Other Works: Amin, *Sounds of Seashells*, Siam Productions (2015); Khlestakov, *The Government Inspector*, Troupe du Bunker (2014); Gratiano, *Merchant of Venice*, Troupe du Bunker (2013).



Dallas Ensing

Ryerson Works: Ralph D., *The Motherfucker with the Hat*, Scene Study (2015).

Other Works: Algernon, *The Importance of Being Earnest*, The Grand Theatre HSP (2014); Petruchio, *The Taming of the Shrew*, The Grand Theatre HSP (2013); Colonel Pickering, *My Fair Lady*, Grand Theatre HSP (2012).



Thomas Fournier

Ryerson Works: Bug, *High Life*, Scene Study (2015).

Other Works: Adam (Himself), *The Complete Works of William Shakespeare [Abridged]*, Shakespeare Kelowna (2015); Roger, *Rent*, Kelowna Actors Studio (2013).

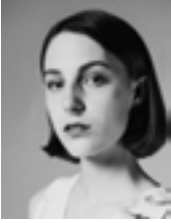


Jonathan Gordon

Ryerson Works: Performer, *Dance To The End of Love*, Greek Tour (2015); Luc, *Orphan Muses*, Scene Study (2015).

Other Works: Jack, *Into the Woods*, Steppin' Out Theatrical Productions (2014); Revered Brown, *Inherit the Wind*, TanenbaumCHAT (2014); Seymour Krelbourne, *Little Shop of Horrors*, TCK Arts Café (2013); Fyedka, *Fiddler on the Roof*, Steppin' Out Theatrical Productions (2012).

Performer Biographies



Sydney Herauf

Ryerson Works: Martine, *Orphan Muses*, Scene Study (2015).

Other Works: Bea, *Unity (1918)*, St. Francis Drama Department (2012).



Veronica Hortiguela

Ryerson Works: Niamh, *Moment*, Scene Study (2015).

Other Works: Geminae, *A Funny Thing Happened on the Way to the Forum*, Scarborough Music Theatre (2014); Catalina, *Mind the Gap*, Éclat School of Performing Arts (2013); Iris, *Iris*, Sears Ontario Drama Festival (2013).



Liam Kinahan

Ryerson Works: Richie, *Streamers*, Scene Study (2015).

Other Works: In the Ashes of Everything I had, Tarragon Theatre Rehearsal Hall (2014); William, *Chatroom*, Lower Ossington Theatre (2014); Tom, *Citizenship*, Lower Ossington Theatre (2014).



Reid Lansky

Ryerson Works: Bruce, *Blue/Orange*, Scene Study (2015).

Other Works: Emmett Forrest, *Legally Blonde*, Cardinal Carter Academy for the Arts (2014); Baker, *Into the Woods [Abridged]*, Cardinal Carter Academy for the Arts (2014).



Andrew Maloney

Ryerson Works: Donnie, *High Life*, Scene Study (2015).

Other Works: Rocky, *Rocky Horror Show*, Sock n' Buskin Theatre Company (2013).

Performer Biographies



Kate Martin

Ryerson Works: *Sherry, Independence*, Scene Study (2015).

Other Works: *Jamie, Mary's Go Round*, Free My Muse Studio (2014).



Clare McConnell

Ryerson Works: *Albertine*, Scene Study (2015).



Nicole Moller

Ryerson Works: *Madelaine, Past Perfect*, Scene Study (2015).

Other Works: *Chorus, The Penelopiad*, Langham Court Theatre (2014).



Anastasia Pioro

Ryerson Works: *Isabelle, The Orphan Muses*, Scene Study (2015).

Other Works: *Chinese Dancer, The King and I*, Oshawa Little Theatre (2010); *Rose, Oklahoma*, All Saints Catholic Secondary School (2011); *Grandma Tzeitel, The Fiddler on the Roof*, All Saints Catholic Secondary School (2012); *Dance Captain, White Christmas*, All Saints Catholic Secondary School (2013).

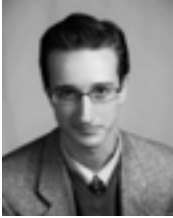


Paige Schuman

Ryerson Works: *Catherine, Orphan Muses*, Scene Study (2015).

Other Works: *Stubb, Moby Dick! The Musical*, Charactors Theatre Troupe (2014); *Princess Winnifred, Once Upon a Mattress*, Unionville Theatre Company (2013); *On the Sawdust Trail, Vlad Novitski*, Bridge to Artists (2012); *Senses, Vlad Novitski*, Bridge to Artists (2011).

Performer Biographies



Ryan Tapley

Ryerson Works: Irwin, *The Secret Rapture*, Scene Study (2015).

Other Works: Pharaoh, *Joseph and the Amazing Technicolor Dreamcoat*, Blind Faith Productions (2015); Doc Gibbs, *Our Town*, Fredericton High School Drama Club (2014); Sky Masterson, *Guys and Dolls*, Theatre New Brunswick Theatre School (2014); Ermolai Lopakhin, *The Cherry Orchard*, FHS Drama Club (2013); Young George/various, *It's a Wonderful Life*, Theatre New Brunswick



Kyra Van Den Eenden

Ryerson Works: Jo, *Independence*, Scene Study (2015).

Other Works: Bessie, *The Drowning Girls*, Arts Huron (2014); Caroline Kirby, *The Happy Journey to Trenton and Camden*, Arts Huron (2013); Deborah, *The Wayward Son*, Arts Huron (2013).



Greta Whipple

Ryerson Works: Isobel, *The Secret Rapture*, Scene Study (2015).

Other Works: Jeannie, *Hair*, Forest Hill Collegiate Institute (2014); Gertie Cummings, *Oklahoma!*, Forest Hill Collegiate Institute (2013); Amanda, *Concord Floral*, Suburban Beast (2012); Mrs. Millennium, *Urinetown*, Forest Hill Collegiate Institute (2012); Peggy, *Jitters*, Forest Hill Collegiate Institute (2011).



Dylan Worth

Ryerson Works: Jackie, *Motherfucker with the Hat*, Scene Study (2015).

Other Works: Blaine Buckles, *Web of Lies* (2014); Frank Butler, *Annie Get Your Gun*, Burlington Student Theatre (2014); Perchick, *Fiddler on the Roof*, Assumption Players (2014); Eddie Johnston, *Blood Brothers*, Burlington Student Theatre (2013).

Production Biographies



Mohamad Abou Ali - *Box Office Manager*

Ryerson Works: Assistant Director, *La Ronde* (2014); Assistant Stage Manager, *EnChoreo* (2014); Assistant Lighting designer, *Six Characters in Search of an Author* (2013); Production Assistant, *Choreographic Works* (2013); Production Assistant, *Love's Labour's Lost* (2012).

Other Works: Project Coordinator, *White Noise* (2014); Project Coordinator, *Passages* (2013). Writer, *7 years later* (2012); Company member, *Kawin Njida: An Apology* (2011); Writer, *Running/still being there* (2012); Writer, *Person 1* (2011); Props, *Seasons of Red Rain* (2011).



Waleed Ansari - *Set Designer*

Ryerson Works: Assistant Director, *Balm in Gilead* (2015); Assistant Set Designer, *La Ronde/ Plough in the Stars* (2014); Assistant Stage Manager, *Mass Exodus* (2014); Props, *Drina* (2014); Lighting Design, *King Lear* (2013); Production Assistant, *The Girl From Maxim* Production Assistant (2012) Production Assistant, *Clown* (2013).

Other Works: Stage Manager/ Producer/ Lighting Designer, *Karenins' Anna* (2014); Stage Manager Trip (2013); Lighting Design/ Set Design, *Always on Alert* (ITC 2013).



Athena Chau - *Lighting Designer*

Ryerson Works: Head Carpenter, *New Voices* (2015); Head Electrician, *Clown* (2014); Production Assistant, *Mass Exodus* (2014); Production Assistant, *Cerulean Blue* (2014); Production Assistant, *LOFT* (2013).

Other Works: Program Administrator, *Art School Musical (First Run & Re-run)*, Edward Lam Dance Theatre (2014); Program Administrator, *I Hate Therefore I Marry (Re- run)*, Edward Lam Dance Theatre (2014).



Laura Coleman - *Head Electrician*

Ryerson Works: Production Assistant, *Dances* (2014); Production Assistant, *Mass Exodus* (2015).



Shellie Costa - *Front of House Supervisor*

Ryerson Works: Production Assistant, *Balm in Gilead* (2015); Production Assistant, *Dances* (2014).

Production Biographies



Beth Dobson - *Head Carpenter*

Ryerson Works: Staging Committee Liaison, *Mass Exodus* (2015); Front of House Supervisor, *The Plough and the Stars* (2014); Production Assistant, *Choreographic Works* (2014); Production Assistant, *Clown* (2013).



Katrina Fletcher - *Production Manager*

Ryerson Works: Assistant Flys, *Tales From The Vienna Woods* (2015); Wardrobe Supervisor, *Hamlet*, (2014); Wardrobe Supervisor, *EnChoreo* (2014).

Other Works: Wardrobe assistant, The National Ballet School of Canada (2015).



Jake Jamieson - *Stage Manager*

Ryerson Works: Production Assistant, *Tales From The Vienna Woods* (2015); Production Assistant, *Hamlet* (2014).



Noah Langer - *Head of Audio*

Ryerson Works: Assistant Director, *Spring Awakening* (2015); Front of House Supervisor, *Dances* (2014); Production Assistant, *Scorched* (2013); Production Assistant, *LOFT* (2013).

Other Works: Producer, *Hi Skool* (2015); Sound Tech Assistant, Open Roof Festival (2013-Present); Writer/Director/Producer, *Viva!*, Toronto Fringe Festival (2012); Writer/Director/Producer, *Video Games: The Musical!*, Toronto Fringe Festival (2011).



Kyle Maenz - *Head Dresser*

Ryerson Works: Production Assistant, *Balm In Gilead* (2015); Production Assistant, *LOFT* (2014).

Production Biographies



Ivy Mazariegos - *Technical Director*

Ryerson Works: House Head of Electrics for Ryerson Theatre (2015); Sound Designer, *New Voices: Built On Sand* (2015); Head Flyman, *La Ronde* (2014); Production Assistant/Apprentice Flyman, *Martin Chuzzlewitz* (2014); Production Assistant, *Dances* (2013).



Edith Nataprawira - *Head Painter*

Ryerson Works: Assistant Head Painter (2014); Box Office Supervisor, *New Voices Festival* (2014); Assistant Production Manager, *Dances* (2013); Production Assistant, *EnChoreo*, (2013); Production Assistant, *Summerfolk* (2012).

Other Works: Assistant Painter, *Shrek: The Musical Jr.* (2015); Props Manager, *Always on Alert* (2013).



Chandos Ross - *Head of Props*

Ryerson Works: Production Assistant, *New Voices* (2015); Production Assistant, *Dances* (2014).

Other Works: Media Representation and Front of House, *Mad Life Imagined*, Grey Paper Crane Projects (2015); Assistant Stage Manager, InspiraTO Festival, InspiraTO (2015); Assistant Stage Manager, *Days of Wine and Roses*, Renascent House (2015); Assistant Stage Manager, *Blood Relations*, Alumnae Theatre (2015).



Sim Suzer - *Costume Designer*

Ryerson Works: Wardrobe Supervisor, *Spring Awakening* (2015); Head of Paints, *Hamlet* (2014); Production Assistant, *Cerulean Blue* (2014); Production Assistant, *Mass Exodus* (2014); Gel Change Captain, *Embrace the Shake and Oh Bondye, Poukisa?*, *New Voices* (2014); Production Assistant/ Wardrobe Crew, *Dances* (2013).

Other Works: Wardrobe Team, *Shrek the Musical Junior*, Ryerson Summer Camp (2015); Set Designer, *A Quest of Character*, Toronto Fringe Festival (2014); Set Designer/ Head of Paints, *Cactus Flower* (2014).

Production Biographies



Assistants

Alex Doody, Kira Duff, Robynne Harder, Electa Porado

Missing in Photo

Ryan Ostrowski



Production Assistants

Taylor Caldwell, Elizabeth Colleran, Linas Kairys, Christopher Matthews, Andrew Nasturzio, Scott Phyper, Dominique Vigneri

Missing in Photo

Alysson Bernabe, Caitlin Gribbin, Aditi Sharma

Host of Ryerson Theatre School's Social Events

Maple Leaf Aerie 2311 of the Fraternal Order of Eagles (FOE), chartered in Toronto in 1938, is steps from Ryerson University and has been a long-standing supporter of the Ryerson Theatre School and the Performance Production students. The founding of the FOE in 1898 was a result of the collaboration between a Seattle theatre owner and one of the largest travelling vaudeville circuits in the United States. Soon after the founding of the FOE, the new Northwest District of what would become the International Association of Theatre and Stage Employees (IATSE) realized that, by joining the FOE, they could use their lodges, called Aeries, to help resolve labour issues with the producers of the shows, as well as between local people and those who travelled with the shows.



Using the rapidly multiplying Eagles' lodges throughout the United States and Canada, the Northwest District proposed a labour arrangement with the founders of the FOE whereby the Union would assume responsibility for supplying the myriad performance production staff required by the shows. By 1913, the Eagles had more than one million members and IATSE had adopted the labour-supply idea, still called Yellow Card Shows (Eagles membership cards are yellow), throughout North America.

Although the FOE and IATSE are no longer connected in any way, their initial collaboration assured a strong future for both organizations. The Eagles are proud that our mutually-beneficial relationship has come full circle at 17 Elm Street.



**Registration opens
January 2016**

Space is limited!

rtssummer.ca
rts.summer@ryerson.ca
416-979-5086



• **PLAYFUL PLAYERS**
for ages 4-5

• **CREATE AN ENSEMBLE**
for ages 6-12

• **MUSICAL THEATRE PERFORMANCE**
for ages 6-12



Disney's
**Alice in
Wonderland**
JR.

TEEN ACTING ACADEMY
for ages 13-18

SUMMER ACTING INTENSIVE

An enriching experience for both seasoned actors and those new to the stage.

Ages 19 & above | Space is limited

**Ryerson
University**

rtssummer.ca | rts.summer.adults@ryerson.ca | 416-979-5086



facebook.com/ryersontheatreschool

[@rts_ryerson](https://twitter.com/arts_ryerson)

youtube.com/user/RyersonTheatreSchool

RYERSON THEATRE
43 Gerrard Street East

ABRAMS STUDIO
46 Gerrard Street East

www.ryersontheatre.ca
box office 416-979-5118
rtsinfo@ryerson.ca