

**Ryerson Theatre School Presents**

# HAMLET

**By William Shakespeare**

**Rehearsed with Ian Watson  
Co-Rehearsed with Tim Welham**

**Set Design by Maria Colasante  
Lighting Design by Joshua Lueck  
Costume Design by Aubrey Rothman**

**November 26, 27, 28, at 7:00 pm  
November 29 at 1:00 pm**

**ABRAMS STUDIO  
46 Gerrard Street East**

The services of Tim Welham were made possible through Theatre Ontario's Professional Theatre Training Program, funded by the Ontario Arts Council

[www.ryersontheatre.ca](http://www.ryersontheatre.ca)  
box office 416-979-5118  
[rtsinfo@ryerson.ca](mailto:rtsinfo@ryerson.ca)



ONTARIO ARTS COUNCIL  
CONSEIL DES ARTS DE L'ONTARIO

an Ontario government agency  
un organisme du gouvernement de l'Ontario

**R T S**

RYERSON THEATRE SCHOOL



## Special Thanks

Thanks to

Peggy Shannon, Perry Schneiderman, Cynthia Ashperger, Irene Pauzer, Pippa Domville, Sholem Dolgoy, Steve Wilsher, Peter Fleming, Nick Dipchand, RTS students, James Wallace, Bruce Ryder, Annie Bunting, Keiran Bunting, Janine Pearson, Anik Watson.

A special thank you and acknowledgement to Tim Welham, without whose inexhaustible efforts, counsel and support this exercise would not have taken place.

Ian Watson would like to dedicate this production to the memory of his friend and teacher, Bernard Hopkins.

“Thank you God for my life.

Discovering the sense, sound and incredible beauty of Shakespeare in a tiny phrase such as “...then for the third part of a minute hence.” Stop, close your eyes, imagine that phrase, take time to see the miracle of it - See? You see? The unutterable beauty of it.”

*Bernard Hopkins*

## Synopsis

A father slain. An uncle crowned. A mother wed. All in the wake of an army threatening invasion. Amidst this turmoil, Hamlet, Prince of Denmark, has returned home to Elsinore for the funeral of his suddenly deceased father, and the hasty marriage of his mother to his uncle, Claudius, who has succeeded his brother as King. Upon Hamlet's return, he is visited by the ghost of his father, who implores him to exact revenge and kill the one responsible for his death: Claudius. Now Hamlet must take action against his King, yet his bloody course causes him constant torment: is this truly the ghost of his Father? Or is it a demonic vision from Hell? Amongst incestuous sheets, crushing heartbreak, and watchful eyes, Hamlet affects a madness to buy precious time in order to murder Claudius, and in doing so finds himself delving into a world of shadows, death, and insanity.

*Written by Damian Murphy, Assistant to the Director*

This performance runs approximately 3 hours and 30 minutes in length plus a 20 minute intermission.

## Hamlet - Cast

**Zachary Arndt** Hamlet

**Sebastian Biasucci** Polonius, Fortinbras' Captain

**Katherine Cappellacci** Reynaldo, Osric, Rosencrantz

**Audrey Clairman** Marcellus, Hamlet, Second Sailor

**Laura Hamel** Francisco, Ophelia, Second Lady

**Daniel Krmpotic** Hamlet, Priest

**Sean Laird** Cornelius, Claudius

**Ariana Marquis** Guildenstern, Hamlet

**Michael Merrithew** Claudius, Fortinbras

**Sydney Owchar** Gertrude, First Lady, First Sailor

**Kierstyn Penney** Horatio

**Vitan Pravtchev** Hamlet, Player Prolouge, First Gentleman

**Bzhaun Roden** Laertes, Lucianus

**Jonathan Schiller** Ghost of Hamlet, Player King, Grave-digger

**Tori Stewart** Ophelia, First Ambassador

**Leigh Truant** Voltimand, Player Queen, Gertrude

**Alexander Zonjic** Bernardo, Hamlet

Members of the Ensemble also play Courtiers, Servants, Attendants, and Soldiers

## Hamlet - Production

**Daniela Iurato** *Production Manager*  
**Rachael Newbigging** *Technical Director*  
**Amelia Marie Farrugia** *Stage Manager*  
**Katrina Fletcher** *Wardrobe Supervisor*

---

**Maria Colasante** *Set Designer*  
**Joshua Lueck** *Lighting Designer*  
**Aubrey Rothman** *Costume Designer*

---

**Matthew Duarte** *Head of Audio*  
**Emily Meehan** *Head of Carpentry*  
**Noah Feaver** *Head Electrician*  
**Sim Suzer** *Head of Paints*  
**Jameson Peters** *Head of Props*  
**Samantha Wong** *Head Dresser*

---

**Damian Murphy** *Assistant to the Director*  
**Una Wabinski** *Assistant Stage Manager*  
**Jenna Bae** *Assistant Lighting Designer*  
**Harriet Lee** *Assistant Painter*

---

**Nicholas Rai** *Front of House Supervisor*  
**Alex Choo** *Box Office Manager*

---

**Abby-Rose Arnold** *Production Assistant*  
**Jenna Borsato** *Production Assistant*  
**Isabella Carelli** *Production Assistant*  
**Emma Fairley** *Production Assistant*  
**Jacob Jamieson** *Production Assistant*  
**Malcolm Lindsay** *Production Assistant*  
**Angelo Pileggi** *Production Assistant*  
**Jason Schnelder** *Production Assistant*  
**Aaron Tam** *Production Assistant*

---

## Ryerson Theatre School - Production

**Georgia Mock** *Abrams House Technical Coordinator*  
**Somerset Divljakovic** *Assistant Technical Coordinator*  
**Zarina Guzman** *Abrams House Head of Electrics*  
**Hillary Grills** *Abrams House Head of Audio*  
**Mathieu Arsenault** *Abrams House Head of Staging*

---

**Laura Paduch** *Head of Audience Relations*  
**Laura Robinson** *Head of Audience Relations*  
**Cassandra Fidelino** *Front of House Manager*  
**Jeremy Loughton** *Box Office Manager*

---

**Daniel Fletcher** *Wardrobe Shop Supervisor*  
**Solange Ribeiro** *Wardrobe Shop Supervisor*  
**Sierra Boake** *Term Cutter*

---

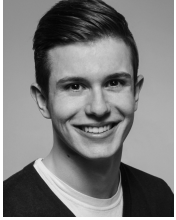
**Hannah Crawford** *Room Booking Assistant*  
**Mariah Ventura** *Production Office Assistant*

## Company Biographies



### **Zachary Arndt - Hamlet**

Ryerson Credits: Alain, *God of Carnage* Scene Study (2014). Other Works: Euelpides, *The Birds*, Hydrama Theatre and Arts Centre (2014); Narrator, *Brand New Ancients*, Hydrama Theatre and Arts Centre (2014).



### **Sebastian Biasucci - Polonius, Fortinbras' Captain**

Ryerson Credits: Michel, *God of Carnage* Scene Study (2014). Other Works: Tyson, *Are You Afraid of the Dark*, Cardinal Carter Academy for the Arts (2013); Scar, *After Ever After: A Disney Murder Mystery*, Cardinal Carter Academy for the Arts (2012); Romeo, *Romeo and Juliet*, Cardinal Carter Academy for the Arts (2011); Student, *Les Miserables*, Cardinal Carter Academy for the Arts (2011); Mad Hatter, *Alice in Wonderland*, Canadian Children's Theatre Company (2010).



### **Katherine Cappellacci - Reynaldo, Osric, Rosencrantz**

Ryerson Credits: Mae, *Radiance* Scene Study (2014). Other Works: Carly, *Admissions*, Teenage Graceland Productions (2014); Woman from Iran, *Emotional Creature*, VDay Toronto/Nightwood Theatre (2014); Alcyone, *Metamorphoses*, Mentor College (2013); Penelope Pennywise, *Urinetown the Musical*, Mentor College (2012); Juror No. 8, *12 Angry Men*, Mentor College (2012); Mrs. Mushnik, *Little Shop of Horrors*, Mentor College (2011).



### **Audrey Clairman - Marcellus, Hamlet, Second Sailor**

Ryerson Credits: Martha, *Strange Snow* Scene Study (2014). Other Works: Katherine, *The Taming of the Shrew*, First Light Theatre (2012); Sarah, *The Ace Team*, Sears Drama Festival (2012); Lisa Beattie, *So Totally Retro*, Guelph Collegiate Vocational Institute (2011); Morgan, *Bathroom Confessional*, Sears Drama Festival (2011); Amanda, *Here Comes The Bribe*, Sears Drama Festival (2010); Shere Khan, *The Jungle Book*, First Light Theatre (2009).



### **Maria Colasante - Set Designer**

Ryerson Credits: Stage Manager, *Just Is* New Voices Festival (2014); Assistant Stage Manager, *Cerulean Blue* (2014); Assistant Set Designer, *Six Characters in Search of an Author* (2013); Assistant Carpenter, *Clown* (2012); Production Assistant, Image Arts Thesis Films (2012). Other Works: Stage Manager, *Hedwig and the Angry Inch*, Lower Ossington Theatre (2014); Assistant Stage Manager, *Hair*, Lower Ossington Theatre (2014); Scenic Painter, *Wizard of Oz*, Ryerson Theatre School Summer Camp (2014); Scenic Painter, *Willy Wonka*, Ryerson Theatre School Summer Camp (2013); Production Assistant, *Lunchbox Loser*, Canadian Film Centre (2013).

## Company Biographies

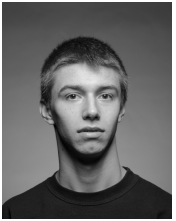


**Matthew Duarte - Head of Audio:** Ryerson Credits: Production Assistant, *New Voices Festival* (2014); Production Assistant, *King Lear* (2013). Other Works: Wardrobe Assistant, *The Wizard of Oz*, Ryerson Theatre School Summer Camp (2014); Head of Audio, *One Acts*, SBA Drama (2012).



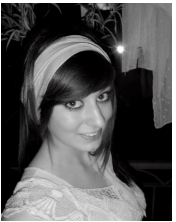
**Amelia Marie Farrugia - Stage Manager**

Ryerson Credits: Lighting Designer, *EnChoreo* (2014); Wardrobe Supervisor, *Six Characters in Search of an Author* (2013); Assistant Stage Manager, *The Book of Wiseman & Hangher New Voices Festival* (2013); Assistant Production Manager, *The Piper* (2013); Company Manager, *Summerfolk* (2012); Production Assistant, *A Chaste Maid in Cheapside* (2012); Production Assistant, *Richard III* (2011). Other Works: Producing Assistant, *TRACE*, Vertical City & Theatre Gargantua (2014); Stage Manager, *Rocketbaby!*, The Arts Engine (2014).



**Noah Feaver - Head Electrician**

Ryerson Credits: Production Assistant, *New Voices Festival* (2014); Production Assistant, *Dances* (2013). Other Works: Lighting Designer, *Vixens of Wonderland*, Concrete Vertigo (2014); Lighting Designer, *Love's Labour's Lost*, Carousel Theatre for Young People (2014); Lighting Operator, *Dancing on the Edge Festival* (2014).



**Katrina Fletcher - Wardrobe Supervisor:** Ryerson Credits: Assistant Wardrobe Supervisor, *EnChoreo* (2014); Production Assistant, *Cinderella* (2013).



**Laura Hamel - Francisco, Ophelia, Second Lady**

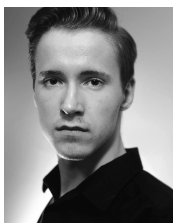
Ryerson Credits: Loretta, *The Melville Boys Scene Study* (2014). Other Works: Sparrow, *The Birds*, University of Regina (2013); Wife, *The Fear and Misery of the Third Reich*, University of Regina (2012); Vixen, *The Eight Reindeer Monologues*, University of Regina (2011); Collaborator, *The Globe Theatre: Fusion Program* (2010); Sophia, *Fools*, Michael A. Riffel (2010).

## Company Biographies



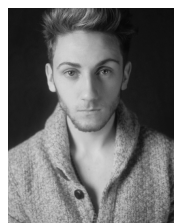
### **Daniela Iurato - Production Manager**

Ryerson Credits: Front of House Supervisor, *Choreographic Works* (2014); Wardrobe Shop Supervisor (2013); Co-Wardrobe Supervisor, *Cinderella* (2013); Wardrobe Coordinator, *New Voices Festival* (2013); Front of House Supervisor, *Love Labour's Lost* (2012); Production Assistant, *Mass Exodus* (2012); Production Assistant, *LOFT* (2011). Other Works: Stage Manager, *Classy Lady*, Alumnae Theatre (2012).



### **Daniel Krmpotic - Hamlet, Priest**

Ryerson Credits: Frank, *Life On Mars* Scene Study (2013). Other Works: Alan Turner, *Goodnight Sweet Prince*, PassAJoke Productions (2014); Scott, *Drafts*, Theatre Westdale (2013); The Doctor, *Asylum*, Sears Drama Festival (2013); Prof. Albus Dumbledore, *Treble Threat* (2012); Guard #1, *Antigone*, Fulcrum Theatre (2012).



### **Sean Laird - Cornelius, Claudius**

Ryerson Credits: Pete, *Some Voices* Scene Study (2014).



### **Harriet Lee - Assistant Painter**

Ryerson Credits: Assistant Stage Manager, *Martin Chuzzlewit* (2014); Props Builder/Buyer, *Six Characters in Search of an Author* (2013); Lighting Designer, *Our Class* (2013); Assistant Head of Props, *Summerfolk* (2012); Production Assistant, *EnChoreo* (2012); Production Assistant, *Ryerson Dances* (2011). Other Works: Dancer, *Kaleidoscope Gala*, Chinese Cultural Arts Association (2014); Dancer, *Rhythms of Harmony Gala*, Chinese Cultural Arts Association (2013).



### **Joshua Lueck - Lighting Designer**

Ryerson Works: Head Electrician, *Choreographic Works* (2014); Assistant Stage Manager, *Cinderella* (2013); Assistant Technical Co-ordinator, *New Voices Festival* (2013); Assistant to Head of Audio, *LOFT* (2012); Production Assistant, *Antigone* (2012); Production Assistant, *Nuit Blanche* (2011). Other Works: Lighting Designer, *The Laramie Project*, Art for Awareness (2014); Stage Manager, *DABDA*, Alvinhayle Dance (2013).

## Company Biographies



### **Ariana Marquis - Guildenstern, Hamlet**

Ryerson Credits: Nona, *Radiance* Scene Study (2014). Other Works: Paula, *Owl River Runners*, IndieCan Entertainment (2014); Cornelius, Captain, Player, *Hamlet*, Bard in the Barracks (2014); Peter Pan, *Peter Pan*, Theatre New Brunswick (2013); Anya, *The Cherry Orchard*, FHS (2013); Emily, *Our Town*, Theatre New Brunswick (2011).



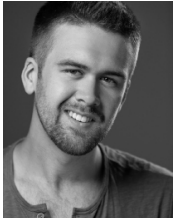
### **Emily Meehan - Head Carpenter**

Ryerson Credits: Production Assistant, *EnChoreo* (2014); Production Assistant, *Cinderella* (2013).



### **Michael Merrithew - Claudius, Fortinbras**

Ryerson Credits: Owen, *Melville Boys* Scene Study (2014).



### **Damian Murphy - Assistant to the Director**

Ryerson Credits: Director, *Drina* New Voices Festival (2014); Assistant Flyman, *Choreographic Works* (2014); Assistant Flyman, *Six Characters in Search of an Author* (2013). Other Works: Stage Manager, *Jesus Freaks* Fringe Festival (2012).



### **Rachael Newbigging - Technical Director**

Ryerson Credits: Lighting Designer, *Drina* New Voices Festival (2014); Assistant Set Designer, *Cerulean Blue* (2014); Deck Electrician, *Cinderella* (2013); Head Carpenter, *New Voices Festival* (2013); Rehearsal Co-ordinator, *The Girl From Maxim's* (2012). Other Works: Stage Manager, *Spamalot*, Lower Ossington Theatre (2014); Artist Assistant, *If I Loved You: Gentlemen Prefer Broadway*, Luminatio Festival (2014).

## Company Biographies



### **Sydney Owchar - Gertrude, First Lady, First Sailor**

Ryerson Credits: Cressie, *Radiance* Scene Study (2014). Other Works: Eponine, *Les Miserables*, Walerville Centre for the Creative Arts (2013); The Visual Artist, *It's An Art Thing*, Sears Ontario Drama Festival, (2013); Meg Giry, *The Phantom Of The Opera*, Walkerville Centre for the Creative Arts (2012); Veera, *My Daughter Veera*, Walerville Centre for the Creative Arts (2011).



### **Kierstyn Penney - Horatio**

Ryerson Credits: Annette, *God of Carnage* Scene Study (2014). Other Works: Maid/Assistant Stage Manager, *Harvey*, Shakespeare by the Sea (2013); Roman Captain, *Cymbeline*, Shakespeare by the Sea (2013); Cobweb/Musician, *A Midsummer Night's Dream*, Shakespeare by the Sea (2012); Alice, *Alice in Wonderland*, Tada! Entertainment (2011).



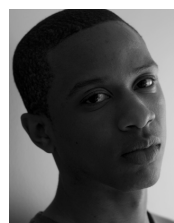
### **Jameson Peters - Head of Props**

Ryerson Credits: Head of Audio, Ryerson Theatre House Crew (2014); Head of Carpentry, *LOFT* (2013); Production Assistant, *The Girl From Maxim's* (2013); Production Assistant, *Clown* (2012). Other Works: Stagehand, Balla Theatre Company (2014); Special Events Assistant, Habitat for Humanity Muskoka (2014); Production Assistant, Theatre Orangeville (2013).



### **Vitan Pravtchev - Hamlet, Player Prologue, First Gentleman**

Ryerson Credits: Patient 1, *And Now, The End* Scene Study (2014); Mike, *Life on Mars* Scene Study (2014). Other Works: Ben Turtle, *Mystery in Paradise 2-Ep. 205*, Cineflix Productions (2014); Daniel, *Storyteller*, Ryerson Film Department (2014); Emcee, *A Tribute to Fosse*, Etobicoke School of the Arts (2013); Bobby Pepper, *Curtains*, No Strings Theatre (2012).



### **Bzhaun Roder - Laertes, Lucianus**

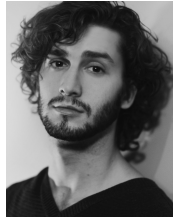
Ryerson Credits: Burton, *Burn This* Scene Study (2013).

## Company Biographies



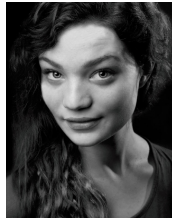
### **Aubrey Rothman - Costume Designer**

Ryerson Credits: Assistant Set Designer, *Martin Chuzzlewit* (2014); Head of Props, *Cinderella* (2013). Other Works: Assistant Stage Manager, *Karenin's Anna* Fringe Festival (2014).



### **Jonathan Schiller - Ghost of Hamlet, Player King, Gravedigger**

Ryerson Credits: Megs, *Strange Snow* Scene Study (2014).



### **Tori Stewart - Ophelia, First Ambassador**

Ryerson Credits: Veronique Vallon, *God of Carnage* Scene Study (2014). Other Works: Rosalind, *As You Wear It*, Iona Catholic Secondary School (2012); Harper, *Losing Hope*, Iona Catholic Secondary School (2012); Nurse Fiona, *The Inspection*, Iona Catholic Secondary School (2011); Wench, *Pirates of Twelfth Night*, Iona Catholic Secondary School (2010); Speaker #2, *History of Comedy*, Iona Catholic Secondary School (2009).



### **Sim Suzer - Head of Paints**

Ryerson Credits: Production Assistant, *Cerulean Blue* (2014); Production Assistant, *Mass Exodus* (2014); Gel Change Captain/Production Assistant, *Embrace the Shake* and *Oh Bondye, Poukisa?* New Voices Festival (2014); Production Assistant, *Dances* (2013). Other Works: Set Designer, *A Quest of Character*, Toronto Fringe Festival (2014); Set Designer/Head of Paints, *Cactus Flower*, Scarborough Theatre Guild (2014).



### **Leigh Truant - Voltimand, Player Queen, Gertrude**

Ryerson Credits: Anna, *Burn This* Scene Study (2014); Other Works: Alice, *Bunks*, Disney (2013); Leyla, *Strings*, Transcendent Entertainment (2013); Naomi, *This Is Why We Fight*, Prairie Kid Productions (2012).

## Company Biographies

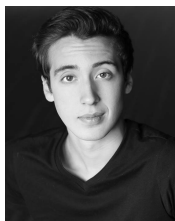


**Una Wabinski - Assistant Stage Manager**

Ryerson Credits: Production Assistant, *Scorched* (2014); Apprentice Stage Manager/Production Assistant, *Six Characters in Search of an Author* (2013).



**Samantha Wong - Head Dresser:** Ryerson Credits: Production Assistant, *Mass Exodus* (2014); Production Assistant, *Six Characters in Search of an Author* (2013).



**Alexander Zonjic - Bernardo, Hamlet**

Ryerson Credits: Dave, *Strange Snow* Scene Study (2014). Other Works: Mike, *Eating French*, InspiraTO Festival (2014); Sketch Ensemble, *Hey 90's Kids, You're Old!*, Toronto Fringe Festival (2014); Banquo, *Macbeth*, Theatre Ensemble (2013); Javert, *Les Miserables*, Theatre Ensemble (2013); Feldzeig, *The Drowsy Chaperone*, Edinburgh Fringe Festival (2010).

### Host of Ryerson Theatre School's Social Events



**Founded in Toronto in 1938, Maple Leaf Aerie 2311 of the Fraternal Order of Eagles (FOE), steps from Ryerson University and the Ryerson Theatre School, has been a long standing supporter of RTS and its Performance Production students. The FOE was founded in 1898 by Seattle theatre owners, including John Cort, who would later become the largest independent legitimate theatre owner in American history, and John Considine, who would form one of the largest vaudeville circuits in history with New York-based partner Tim Sullivan (the Sullivan-Considine Circuit).**

At the time of the Eagles' founding, the new Northwest district of what would become the International Association of Theatrical and Stage Employees (IATSE) found that by joining the FOE they could use their lodges, called aeries, to help resolve labour and contract issues. Using the rapidly multiplying Eagles lodges throughout United States and Canada, the Northwest District proposed a labour arrangement with the Eagles' founders whereby the Union would assume responsibility for supplying the myriad performance production staff required by the shows. By 1913 the Eagles had more than a million members and IATSE adopted the labour-supply idea, still called yellow card shows (Eagles membership cards are yellow), throughout North America.

Although the FOE and IATSE are no longer connected in any way, their initial partnership assured a strong future for both organizations. The Eagles are proud that our mutually-beneficial relationship has come full circle at 17 Elm Street through our current association.

*Written by Tom Robson, long standing Eagles member*



(416) 598 - 5947  
rts.summer@ryerson.ca  
www.rtssummer.ca



Theatre camps and programs for Ages 5-18  
Past productions include:





**RYERSON THEATRE SCHOOL**

**[facebook.com/ryersontheatreschool](https://facebook.com/ryersontheatreschool)**

**[@rts\\_ryerson](https://twitter.com/rts_ryerson)**

**[youtube.com/user/RyersonTheatreSchool](https://youtube.com/user/RyersonTheatreSchool)**

**RYERSON THEATRE**

43 Gerrard Street East

**ABRAMS STUDIO**

46 Gerrard Street East

[www.ryersontheatre.ca](http://www.ryersontheatre.ca)  
box office 416-979-5118  
[rtsinfo@ryerson.ca](mailto:rtsinfo@ryerson.ca)